

New 2500W*¹ High-Power Hair Dryer with Ion Conditioning EH-NE82-K655/EH-NE81-K655 featuring an Advanced Heat Protection Sensor*²

*¹ At 240V *² For the EH-NE82-K655



EH-NE82-K655



EH-NE81-K655

Panasonic introduces the 2500W high-power Hair Dryer EH-NE82-K655 and EH-NE81-K655, enabling fast hair drying and hair care with its ion conditioning function. To fill the need for powerful hair dryers, Panasonic has developed these hair dryers to provide the highest-ever wattage in its history. At the same time, minimizing hair damage is a common concern. That is why Panasonic hair dryers are not just high-powered but are designed to achieve hair care. The EH-NE82-K655 features an Advanced Heat Protection Sensor* that provides smart, superior protection and care by controlling the airflow temperature to prevent overheating. The stylish yet ergonomic design achieves easy use, making your beauty routine more enjoyable.

2500W high wattage for fast dry – most powerful ever in Panasonic history

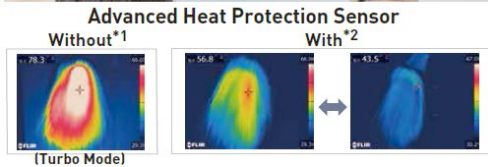
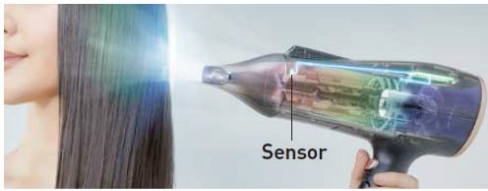


The 2500W design delivers a powerful airflow for fast drying.

The rotation speed of the motor and fan are increased by approximately 15%, resulting in approximately 55% greater air pressure for even more powerful airflow*.

*Compared with the conventional Panasonic EH5573 model

Smart hair care with Advanced Heat Protection Sensor (for the EH-NE82-K655)



*1 When the conventional model is used in Turbo Mode for 1 minute.

*2 Test conditions: 220V, Advanced Heat Protection Mode, airflow at 2, room temperature at 25-degree C

The Hair Dryer EH-NE82-K655 features an Advanced Heat Protection Sensor that constantly detects the air temperature. This sensor system automatically controls the air temperature to avoid unnecessary and excessive heat, providing superior protection and care for healthy hair and scalp.

The EH-NE81-K655 has a Heat Protection mode that enables hair drying with a comfortable air temperature to prevent overheating.

Ion conditioning for shiny, frizz-free hair



The Hair Dryers EH-NE82-K655 and NE81-K655 are equipped with an external ion outlet. It is separated from the airflow outlet, which prevents the ions from being damaged by hot air. The ions coat and moisturize hair to suppress static electricity for shiny, smooth hair.

Easy use



A dual sliding switch allows the airflow volume (2-step) and temperature (3-step) to be controlled individually. Users can flexibly set the best combination setting as they like. Plus, a Cool-Shot button provides cool airflow while it is pressed.

Attachments

The Hair Dryer EH-NE82-K655 and EH-NE81-K655 come with a set nozzle for effective hair drying and the EH-NE82-K655 comes bundled with a diffuser.

Panasonic is committed to encouraging effortless beauty for women, and enriching people's lives, by introducing a wide range of home products designed and developed under strict quality and safety controls.

Specifications

	EH-NE82-K655	EH-NE81-K655
Wattage	2500W	
Ion	Yes	
Advanced Heat Protection Sensor	Yes	No (Heat Protection Mode)
Cool-Shot button	Yes	
Speed	2-step	
Temperature	3-step	
Attachment	Set nozzle, diffuser	Set nozzle
Body Size (WxHxD)	92mm x 222mm x 216mm	92mm x 222mm x 216mm
Weight	Approx. 540g Without cord and nozzle	Approx. 560g Without cord and nozzle

- Specifications are subject to change without notice.
- The effect may vary depending on the hair condition of the person.